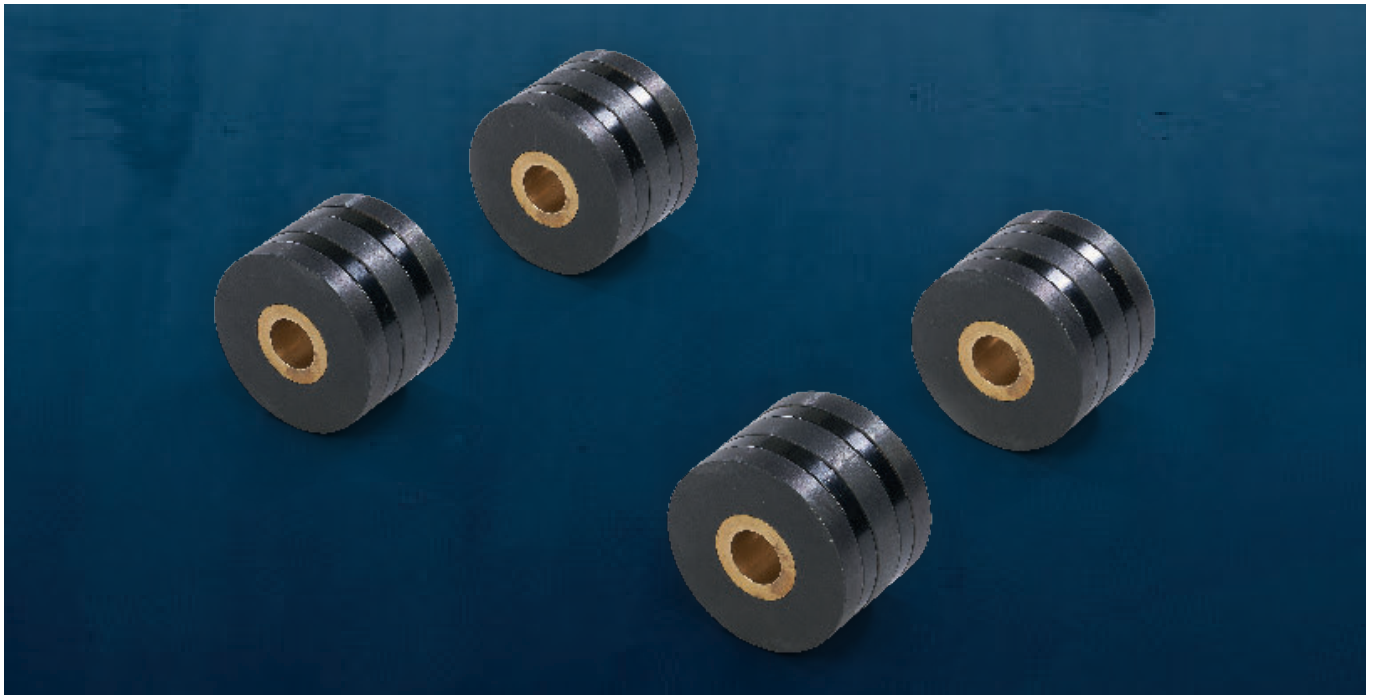




MMW-001

The Miko Magnetic Wheel is a powerful magnet to be used on vessels and structures above and below the waterline. The hollow cylinder allows for a shaft to be fastened in the centre.



The magnetic component consists of neodymium and is coated with epoxy to improve its corrosion resistance in sea water.

All Miko magnets are shipped in a double-skin steel box to shield off the magnetic field and prepare it for air freight.

The magnet is delivered in box of 4 pcs.

Read "IMPORTANT NOTES ABOUT MIKO MAGNETS" enclosed in each box before use.

SPECIFICATIONS

HOLDING FORCE

80 KG*

OUTER Ø

54 MM

INNER Ø

15 MM

LENGTH

39 MM

GROSS WEIGHT (BOX)

7 KG

QUANTITY IN BOX

4 PCS

*Refers to the perpendicular holding force when applied directly onto a clean mild steel plate of minimum thickness 10 mm.



mikomarine.com

